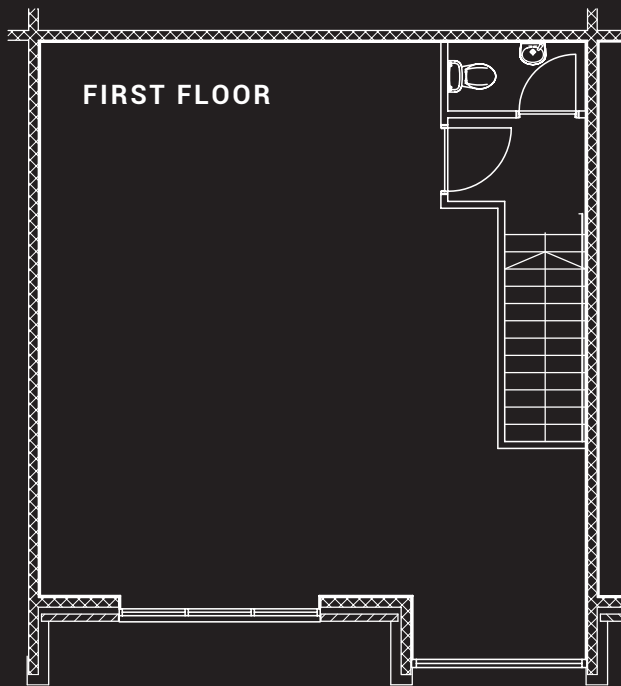


Office Type A or B

single floor



Size

Ground floor
575 sq. ft. (53m²)

OR first floor
575 sq. ft. (53m²)

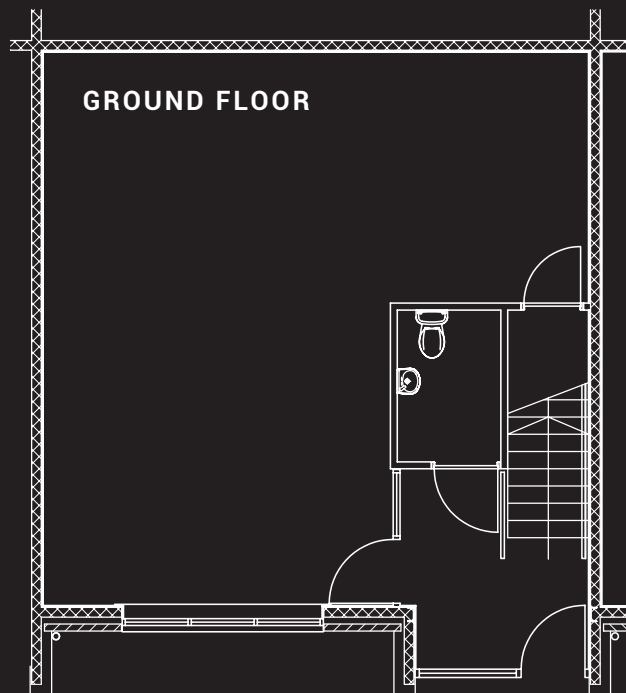
Staff size

Suitable for up to approximately 8 staff members*

* depending on office set up and meeting room requirements

Parking spaces

2 allocated spaces per 575 sq. ft. (53m²) unit



General information

Type A and B offices have their own front doors, providing creative and flexible working environments for small businesses with up to eight staff, set across one floor (either ground or first floor). A selection of units available on Quay West Business Village offer river views.

These offices are available to let as well as to purchase, giving small businesses or their proprietors a unique opportunity to own their premises.

~ Unit types A and B differ very slightly.

** Please note all floor plans are approximate and for illustrative purposes only. Exact specification of each unit can be obtained from the Commercial team at Adderstone Group.

Email commercialestates@adderstonegroup.com or contact 0191 269 9944 for more info.

| SPACE (SQ.FT.) | SPACE (M ²) | FLOORS | STAFF | PARKING |
|----------------|-------------------------|--------|-------|---------|
| 575 | 53 | 1 | 8 | 2 |

quaywestsunderland.co.uk