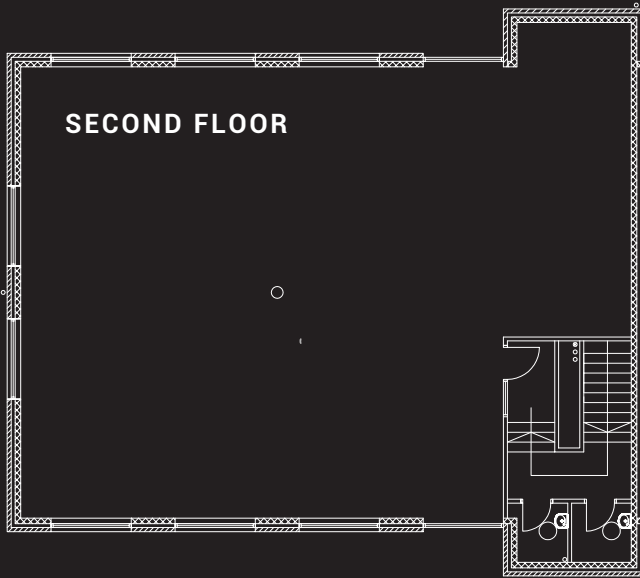


Office Type E

set over two floors



Size

Total space (set over two floors)
3600 sq. ft. (334m²)

First floor	Second floor
1800 sq. ft.	1800 sq. ft.
(167m ²)	(167m ²)

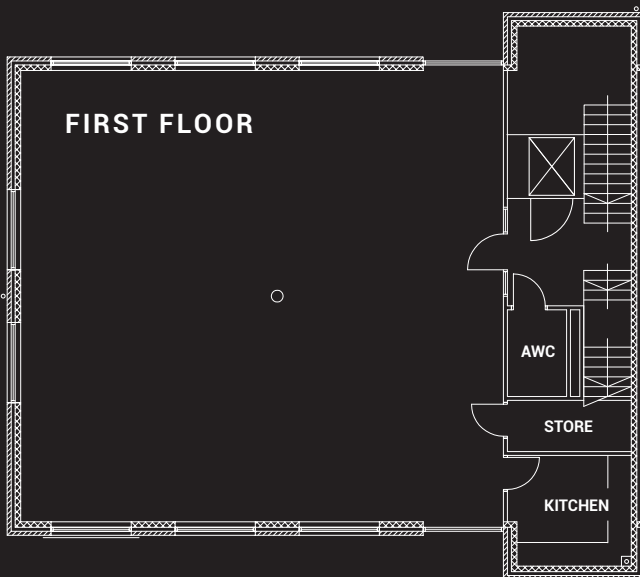
Staff size

Suitable for up to approximately 50 staff members*

* depending on office set up and meeting room requirements

Parking spaces

10 allocated spaces per 3600 sq. ft. (334m²) unit



General information

Office Type E is set over two floors (first and second floor) with access from Crown Road.

The offices are designed with flexibility and business growth in mind, allowing purchasers the option to acquire both floors, with the prospect of future expansion to occupy the entire building if required.

These office types provide flexible working solutions and can be of bespoke design to ensure best use for your business.

** Please note all floor plans are approximate and for illustrative purposes only. Exact specification of each unit can be obtained from the Commercial team at Adderstone Group.
Email commercialestates@adderstonegroup.com or contact 0191 269 9944 for more info.

SPACE (SQ.FT.)	SPACE (M ²)	FLOORS	STAFF	PARKING
3600	334	2	50	10

quaywestsunderland.co.uk